

Remote Visual Inspection Solutions



- Videoscopes
- Light Sources
- Accessories

Satisfying the Remote Visual Inspection Demands of Diverse Industries

We are a world-renowned leader in remote visual inspection (RVI) technology with a comprehensive portfolio of industrial videoscopes that facilitate accurate inspections of small, enclosed spaces. Our RVI solutions are used in a wide range of industries and applications.

Applications

Industries	Applications
Aerospace	<ul style="list-style-type: none"> • Turbine blades • Combustion chamber • Landing gear • Airframe
Power Generation	<ul style="list-style-type: none"> • Heat exchanger pipes • Turbine blades • Power plant equipment • Wind gearboxes
Oil/ Gas/ Chemical Plants	<ul style="list-style-type: none"> • Process pipes • Heat exchanger pipes • Boiler maintenance • Tanks
Automotive	<ul style="list-style-type: none"> • Engine parts • Assembled units • Cast parts • R&D, quality assurance
Defense/Security	<ul style="list-style-type: none"> • Aircraft maintenance • Customs & border control • Search & rescue • Police & special forces
Architecture/ Construction	<ul style="list-style-type: none"> • Water pipes • Gas pipes • Ceiling and flooring • Elevator maintenance
Manufacturing	<ul style="list-style-type: none"> • Small parts • Drilled parts • Production facilities • R&D, quality assurance
Infrastructure	<ul style="list-style-type: none"> • Bridge maintenance • Tunnel maintenance • Railroad maintenance • Water (drain) pipe maintenance



Videoscopes

Advanced and Feature Packed

IPLEX™ NX

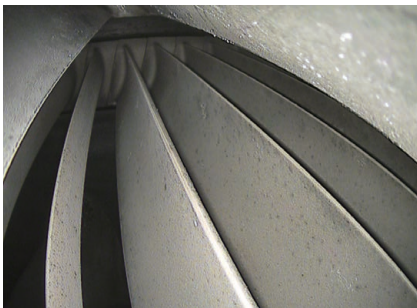
Diameter: 4.0 mm/6.0 mm/6.2 mm Lengths: 3.5 m to 7.5 m (11.5 to 24.6 ft)

High-quality images and expanded measurement capabilities

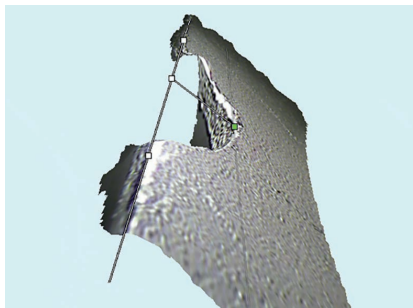


Features

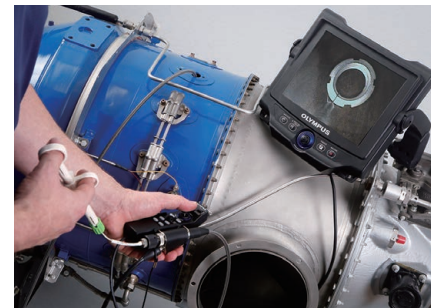
Intensely bright laser diode illumination



Measure with confidence using 3D modeling



Internal working channel scope



Advanced Extra-Long Videoscope

IPLEX GAir

Diameter: 8.5 mm Lengths: 20.0 m to 30.0 m (65.6 to 98 ft)

Efficiently inspect complex piping systems up to 30 meters



Features

Precise articulation regardless of length



Clear wide-view images for faster inspections



See clearly from a safer distance



Versatile Visual Inspection

IPLEX GX/GT

Diameter: 4.0 mm/6.0 mm Lengths: 2.0 m to 10.0 m (6.6 to 32.8 ft)



A good balance of portability, imaging capabilities, and ease of use

Features

Easy-to-use touch screen and hot key controls



Bright and clear images with smart video



Interchangeable scopes and light sources (white, UV, IR)



The Portable, Powerful Videoscope

IPLEX G Lite/G Lite-W

Diameter: 4.0 mm/6.0 mm (4.0 mm only for G Lite-W)
Lengths: 2.0 m to 10.0 m (6.6 to 32.8 ft) (G Lite-W available in 2 m only)



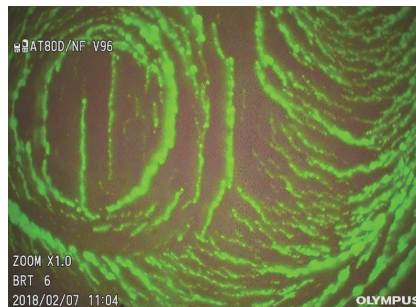
Small and tough enough to use almost anywhere

Features

Ergonomic and lightweight



Flexible UV and IR lighting options



IPLEX G Lite-W:
Tailored for wind tower inspections



Videoscopes

Scopes up to 10 Meters (32.8 Feet) Long

Long Scopes

Diameter: 6.0 mm Lengths: 5.0 m to 10.0 m (16.4 to 32.8 ft)



Durable long insertion tubes with articulation

Features

- Various lengths, from 5.0 m to 10.0 m
- Simple user interface
- Stereo measurement available (depending on the model; stereo tip adaptor required)

Options

Flexible guide tube*
(7.5 m and 10.0 m; 24.6 ft and 32.8 ft)

Increases the insertion tube's rigidity

*Only for IPLEX GX/GT/G Lite



Long Scopes General Specifications

	IPLEX NX	IPLEX GX/GT	IPLEX G Lite
Scope diameter	6.0 mm (0.24 in.)	6.0 mm (0.24 in.)	6.0 mm (0.24 in.)
Scope length	5.0 m / 7.5 m (16.4 ft. / 24.6 ft.)	7.5 m / 10.0 m (24.6 ft. / 32.8 ft.)	10.0 m (32.8 ft.)
Monitor size	8.4 inch	8.0 inch	4.3 inch
Interchangeable scope unit	✓	✓	—
Illumination	Laser diode	LED	LED
Light source	White	White (standard) UV, IR (optional)	White (standard) UV, IR (optional)
Measurement	Stereo with 3D modeling Scalar	Stereo (optional, GX only) Scalar	Stereo (optional) Scalar

Ultra-Thin Videoscope

IPLEX TX

Diameter: 2.4 mm Length: 1.2 m (3.9 ft)

The videoscope's ultra-thin diameter enables you to view inside very narrow spaces



Features

An ultra-thin videoscope with articulation



Interchangeable scope system





Options

Protective braid

Enhanced durability for IPLEX TX insertion tubes



Videoscope Comparison

Product image			
Product name		IPLEX NX	IPLEX GAIR
Scope diameter	Scope length		
ø2.4 mm (0.09 in.)	1.2 m (3.9 ft.)	—	—
ø4.0 mm (0.16 in.)	2.0 m (6.6 ft.)	—	—
	3.5 m (11.5 ft.)	✓	—
	5.0 m (16.4 ft.)	✓	—
ø6.0 mm (0.24 in.)	2.0 m (6.6 ft.)	—	—
	3.5 m (11.5 ft.)	✓	—
	5.0 m (16.4 ft.)	✓	—
	7.5 m (24.6 ft.)	✓	—
ø6.2 mm (0.24 in.)	10.0 m (32.8 ft.)	—	—
	3.5 m (11.5 ft.)	✓	—
ø8.5 mm (0.33 in.)	20.0 m (65.6 ft.)	—	✓
	30.0 m (98.4 ft.)	—	✓
Interchangeable scope unit		✓	✓
Articulation method		TrueFeel electronic scope tip articulation	Pneumatic articulation with built-in air compressor
Articulation direction		U/D/L/R	U/D/L/R
Articulation angles		130° (IV9435N/IV9450N) 180° (IV9635N/IV9650N) 150° (IV9675N)	90°
Dimensions (W × H × D)		320 mm × 310 mm × 180 mm (12.6 in. × 12.2 in. × 7.1 in.)	359 mm × 465 mm × 307 mm (14.1 in. × 18.3 in. × 12.1 in.)
Approx. weight		7.1 to 7.6 kg (15.7 to 16.8 lbs)	15.3 to 16.4 kg (33.7 to 36.2 lbs)
Monitor size (inches)		8.4	8.0
Touch screen		✓	✓
High temperature sensor		✓	✓
SmartTip adaptor		✓	—
Oil clearing tip adaptor (direct view only)		✓ (ø6.2 mm only)	✓
Illumination		Laser diode	LED
Light sources		White	White
Gain control (Auto, WIDER, Manual)		✓	✓
Measurement		Stereo with 3D modeling Scalar	Scalar
Spot Ranging		5 points	—
Constant video recording		—	✓
Bookmark on video		—	✓
Recording media		USB flash memory (still image recording only) SDHC	SDHC (Normal) microSDHC (constant video)
Still image recording	Resolution	H768 × V576 – 4 mm scopes H1024 × V768 – 6 mm scopes	H640 × V480
	Recording format	Compressed JPEG format	Compressed JPEG format
Video recording	Resolution	H768 × V576 – 4 mm scopes H1024 × V768 – 6 mm scopes	H640 × V480
	Recording format	MPEG 4 AVC/H.264 Windows Media Player 12 compatible	MPEG 4 AVC/H.264 conforms to Baseline Profile Windows Media Player 12 compatible
Audio recording		✓	✓
Video out		VGA	HDMI 1.4 Type A
Battery operation time (approx. minutes)		100	180
MIL-STD compliance		✓	—
IP standard		IP55	—

*1 Extend the life of the battery by using the ECO mode lighting control



IPLEX GX		IPLEX GT		IPLEX G Lite		G Lite-W		IPLEX TX			
	—		—		—		—		✓		
	✓		—		—		—		—		
	✓		—	✓	—		—		—		
	—		—		—		—		—		
	✓		—	✓	—		—		—		
	✓		—	✓	—		—		—		
	—		—		—		—		—		
	✓		—		—		—		—		
	✓		—	✓	—		—		—		
	—		—		—		—		—		
	—		—		—		—		—		
	—		—		—		—		—		
✓	Available between the same scope model		—		—		—		✓		
TrueFeel electronic scope tip articulation				TrueFeel electronic scope tip articulation				Direct manipulation			
U/D/L/R				U/D/L/R				U/D			
130° (IV9420G/IV9435G) 150° (IV9620G/IV9635G) 120° (IV9675G) 110° (IV96100G)				130° (IV9420GL/IV9420GL-W/IV9435GL) 150° (IV9620GL/IV9635GL) 110° (IV96100GL)				135°			
Main unit: 241 mm × 190 mm × 70 mm (9.5 in. × 7.5 in. × 2.8 in.) Scope unit: 97 mm × 188 mm × 158 mm (3.8 in. × 7.4 in. × 6.2 in.)				128 mm × 203 mm × 110 mm (5.0 in. × 8.0 in. × 4.3 in.)				Main unit: 239 mm × 215 mm × 99 mm (9.4 in. × 8.5 in. × 3.9 in.) Control unit: 49 mm × 59 mm × 334 mm (1.9 in. × 2.3 in. × 13.2 in.)			
2.76 to 3.43 kg (6.1 to 7.6 lbs)				1.15 to 1.83 kg (2.5 to 4 lbs)		1.16kg(2.6 lbs)		2.2 kg (4.9 lbs)			
8.0				4.3				6.5			
✓				✓				—			
✓				✓				—			
—				—				—			
✓				✓				—			
LED				LED				LED tip adaptor			
White (standard), UV (option), IR (option)				White (standard), UV (option), IR (option)				White			
✓	Auto only		✓		✓		✓		✓		
Stereo (optional) Scalar	Scalar	Stereo (optional) Scalar	Scalar	Stereo (optional) Scalar	Scalar				—		
1 point	—	1 point	—	1 point	—				—		
✓	—	✓	—	✓	—				—		
✓	—	✓	—	✓	—				—		
SDHC (Normal) microSDHC (constant video)				SDHC (Normal) microSDHC (constant video)				USB flash memory			
H768 × V576				H768 × V576				NTSC: H640 × V480 PAL: H768 × V576			
Compressed JPEG format				Compressed JPEG format				Compressed JPEG format			
H768 × V576				H768 × V576				H640 × V480			
MPEG 4 AVC/H.264 conforms to Baseline Profile Windows Media Player 12 compatible				MPEG 4 AVC/H.264 conforms to Baseline Profile Windows Media Player 12 compatible				AVI MPEG-4 format Windows Media Player compatible			
✓				✓				—			
HDMI Type A				HDMI Type C				RCA Composite			
150				90*1				150			
✓				✓				—			
IP65				IP65				IP55			

Optical Tip Adaptors for the IPLEX Series

IPLEX NX

		4.0 mm Optical Tip Adaptors					4.0 mm Stereo Tip Adaptors	
		AT80D/FF-IV94N	AT120D/NF-IV94N	AT120D/FF-IV94N	AT100S/NF-IV94N	AT100S/FF-IV94N	AT70D/70D-IV94N	AT50S/50S-IV94N

		6.0 mm Optical Tip Adaptors					6.0 mm Stereo Tip Adaptors		
		AT50D/FF-IV96N	AT80D/FF-IV96N	AT120D/NF-IV96N	AT120D/FF-IV96N	AT120S/NF-IV96N	AT120S/FF-IV96N	AT90D/90D-IV96N	AT70S/70S-IV96N

		6.2 mm Optical Tip Adaptors					6.2 mm Stereo Tip Adaptors	
		AT80D-IV96X1N	AT120D/NF-IV96X1N	AT120D/FF-IV96X1N	AT80S-IV96X1N	AT120S-IV96X1N	AT70D/70D-IV96X1N	AT60S/60S-IV96X1N
Optical system	Field of view	80°	120°	120°	80°	120°	70°/70°	60°/60°
	Direction of view	Forward	Forward	Forward	Side	Side	Forward	Side
	Depth of field* ¹	35 to ∞ mm	2 to 200 mm	17 to ∞ mm	30 to ∞ mm	8 to ∞ mm	5 to 200 mm	3 to 150 mm

IPLEX GAir

		8.5 mm Optical Tip Adaptors				
		AT120D/NF-IV98GA	AT120D/FF-IV98GA	AT120S/NF-IV98GA	AT120S/FF-IV98GA	AT220D-IV98GA
Optical system	Field of view	120°	120°	120°	120°	220°
	Direction of view	Forward	Forward	Side	Side	Forward
	Depth of field* ¹	4 to 190 mm	25 to ∞ mm	1 to 25 mm	6 to ∞ mm	1 to ∞ mm

IPLEX GX/GT, IPLEX G Lite

		4.0 mm Optical Tip Adaptors					4.0 mm Stereo Tip Adaptors		6.0 mm Stereo Tip Adaptors	
		AT80D/FF-IV94G	AT120D/NF-IV94G	AT120D/FF-IV94G	AT100S/NF-IV94G	AT100S/FF-IV94G	AT50D/50D-IV94	AT50S/50S-IV94	AT60D/60D-IV96	AT60S/60S-IV96
Optical system	Field of view	80°	120°	120°	100°	100°	50°/50°		60°/60°	
	Direction of view	Forward	Forward	Forward	Side	Side	Forward	Side	Forward	Side
	Depth of field* ¹	35 to ∞ mm	2 to 200 mm	17 to ∞ mm	2 to 15 mm	8 to ∞ mm	5 to ∞ mm	4 to ∞ mm	5 to ∞ mm	4 to ∞ mm

		6.0 mm Optical Tip Adaptors									
		AT40D-IV96G	AT80D/NF-IV96G	AT80D/FF-IV96G	AT120D/NF-IV96G	AT120D/FF-IV96G	AT80S-IV96G	AT120S/NF-IV96G	AT120S/FF-IV96G	AT220D-IV76	AT100D/100S-IV76
Optical system	Field of view	40°	80°	80°	120°	120°	80°	120°	120°	220°	100°/100°
	Direction of view	Forward	Forward	Forward	Forward	Forward	Side	Side	Side	Forward	Forward/Side
	Depth of field* ¹	200 to ∞ mm	9 to ∞ mm	35 to ∞ mm	2 to 200 mm	19 to ∞ mm	15 to ∞ mm	1 to 25 mm	3 to ∞ mm	1.6 to ∞ mm	2 to ∞ mm

IPLEX G Lite-W

		4.0 mm Optical Specification
Optical system	Field of view	120°
	Direction of view	Forward
	Depth of field* ¹	4 to ∞ mm

*1 Indicates the range over which the image can be viewed clearly.

Accessories For Videoscopes

Rigid Sleeve

MAJ-1737 (For 4.0 mm dia. insertion tube)

MAJ-1253 (For 6.0/6.2 mm dia. insertion tube)

Rigid sleeves allow easy insertion of videoscopes.



Light Sources

LED Light Source

LG-LSLED-RVI

Featuring a long-life white LED, the LG-LSLED-RVI light source is approx. 100 times brighter than the ILK-7 halogen light source yet consumes about half the power. This low consumption model meets most industrial needs.



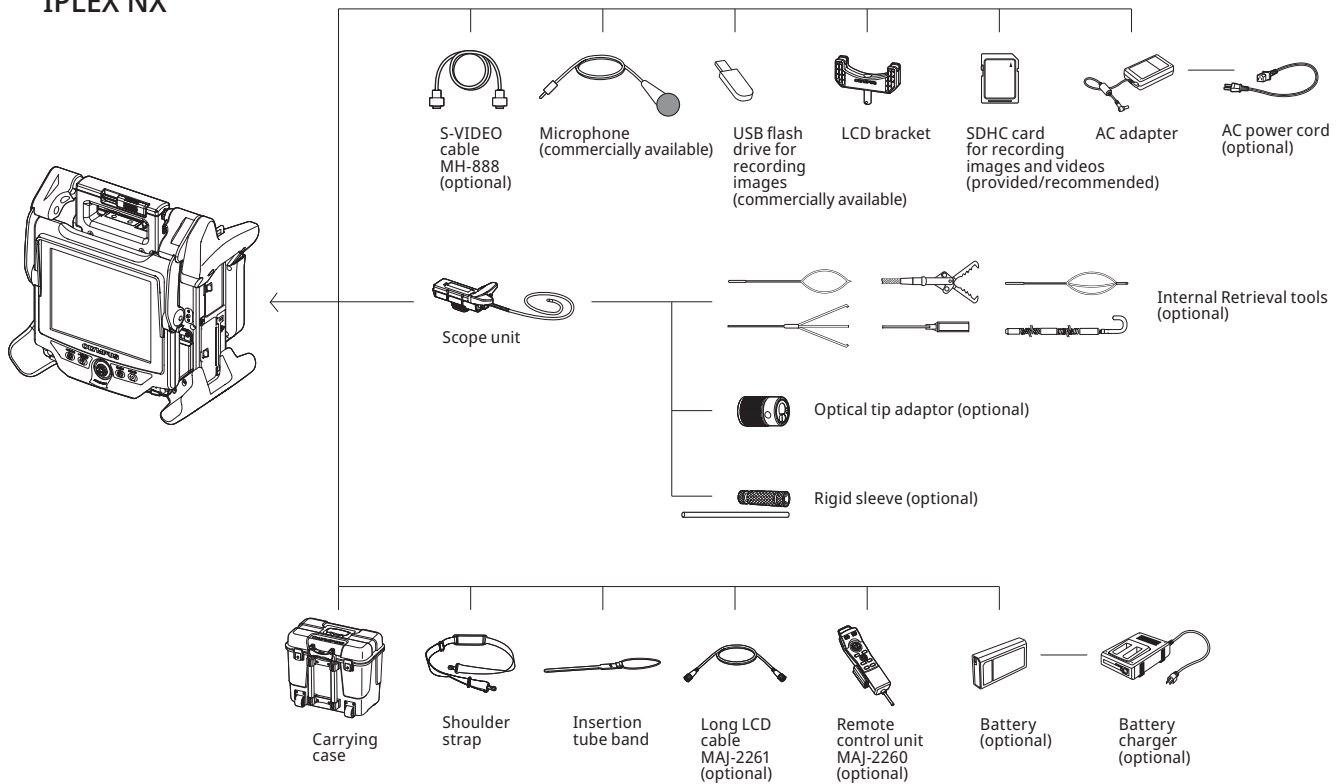
Specifications

	LG-LSLED-RVI
INPUT	AC 100-240V, 50/60Hz
OUTPUT	DC24V (with supplied AC adapter)
Power consumption	37 W
Dimensions (W x H x D)	114 mm x 137 mm x 231 mm
Weight	2.45 kg
LED life time	Approx. 60,000 hours

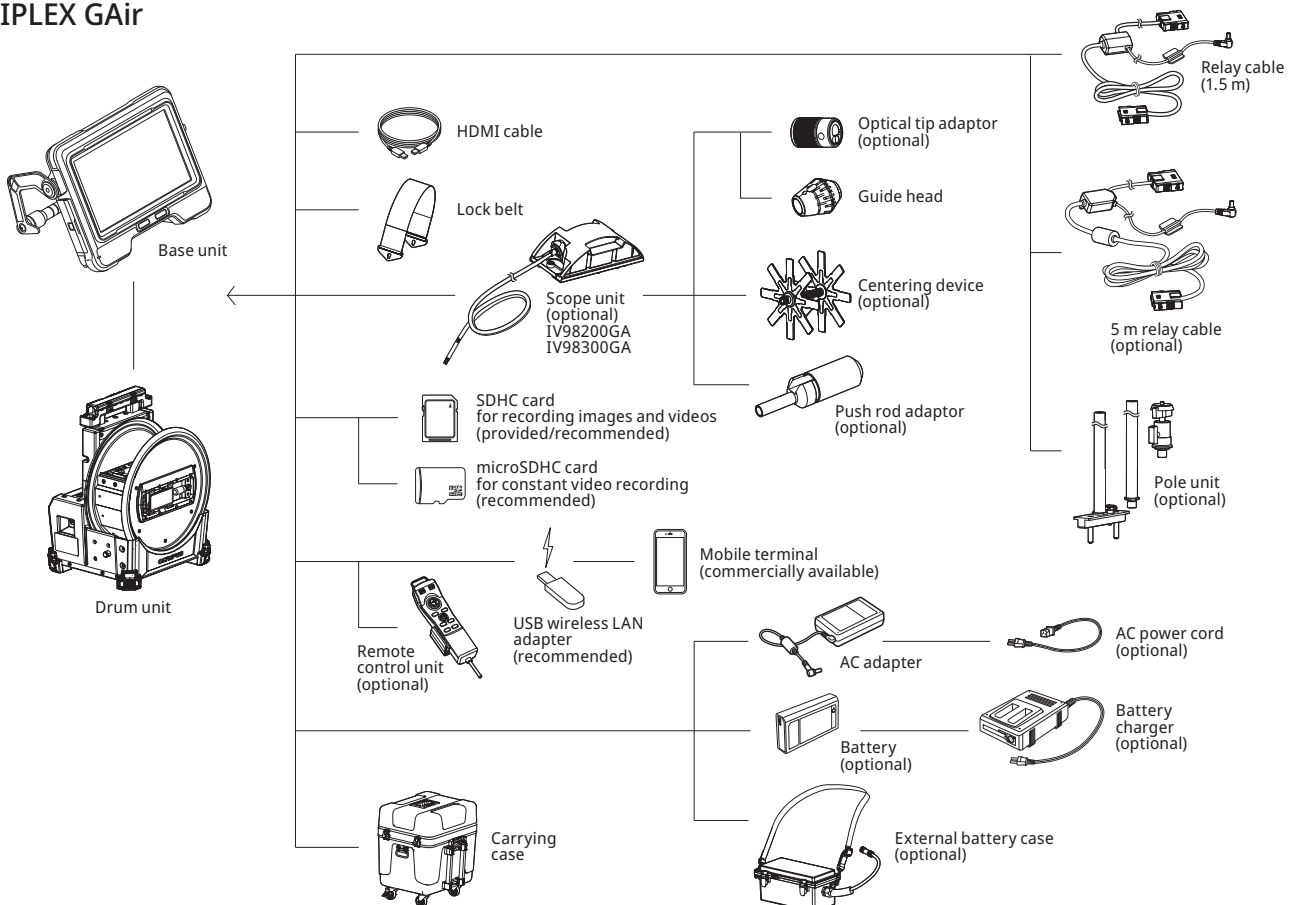
System Charts

Videoscopes

IPLEX NX

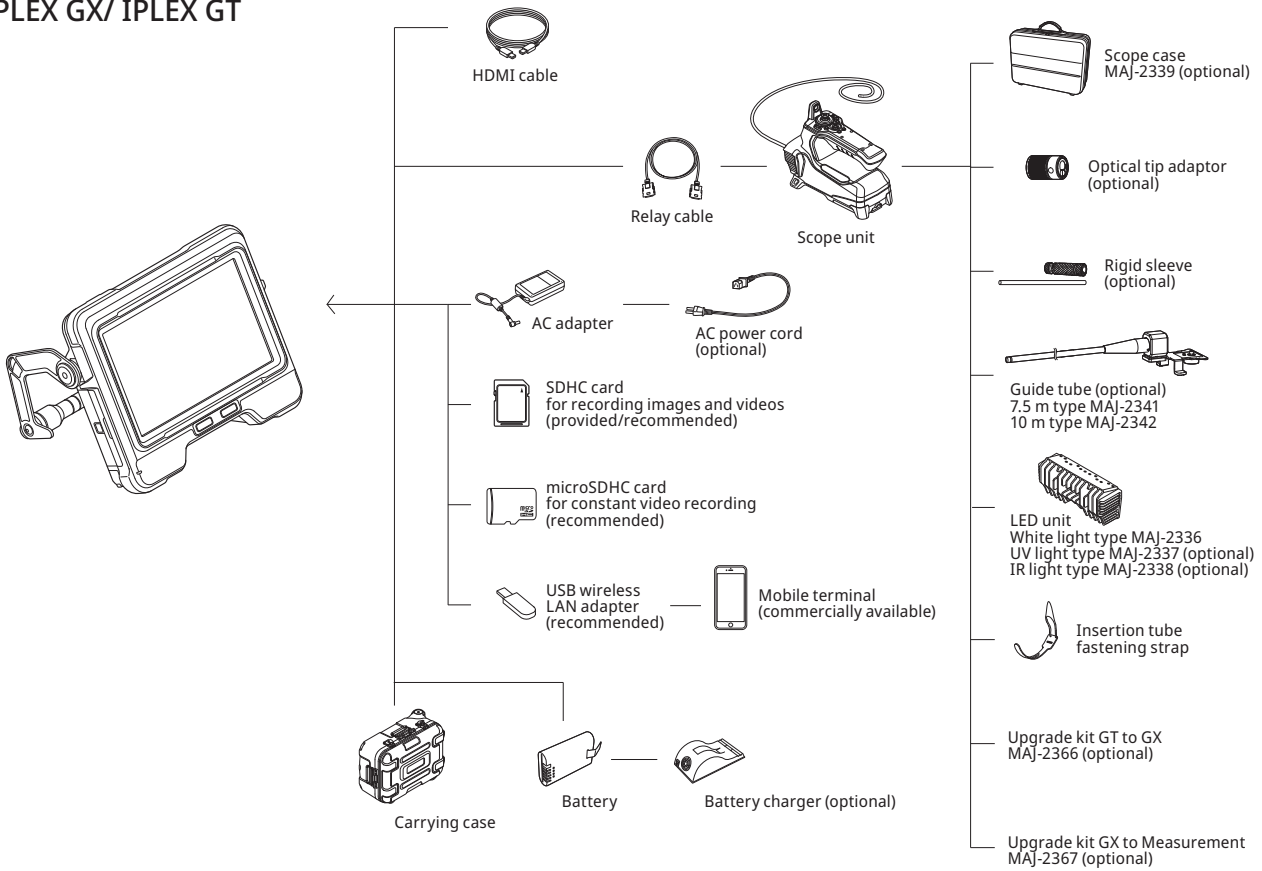


IPLEX GAir

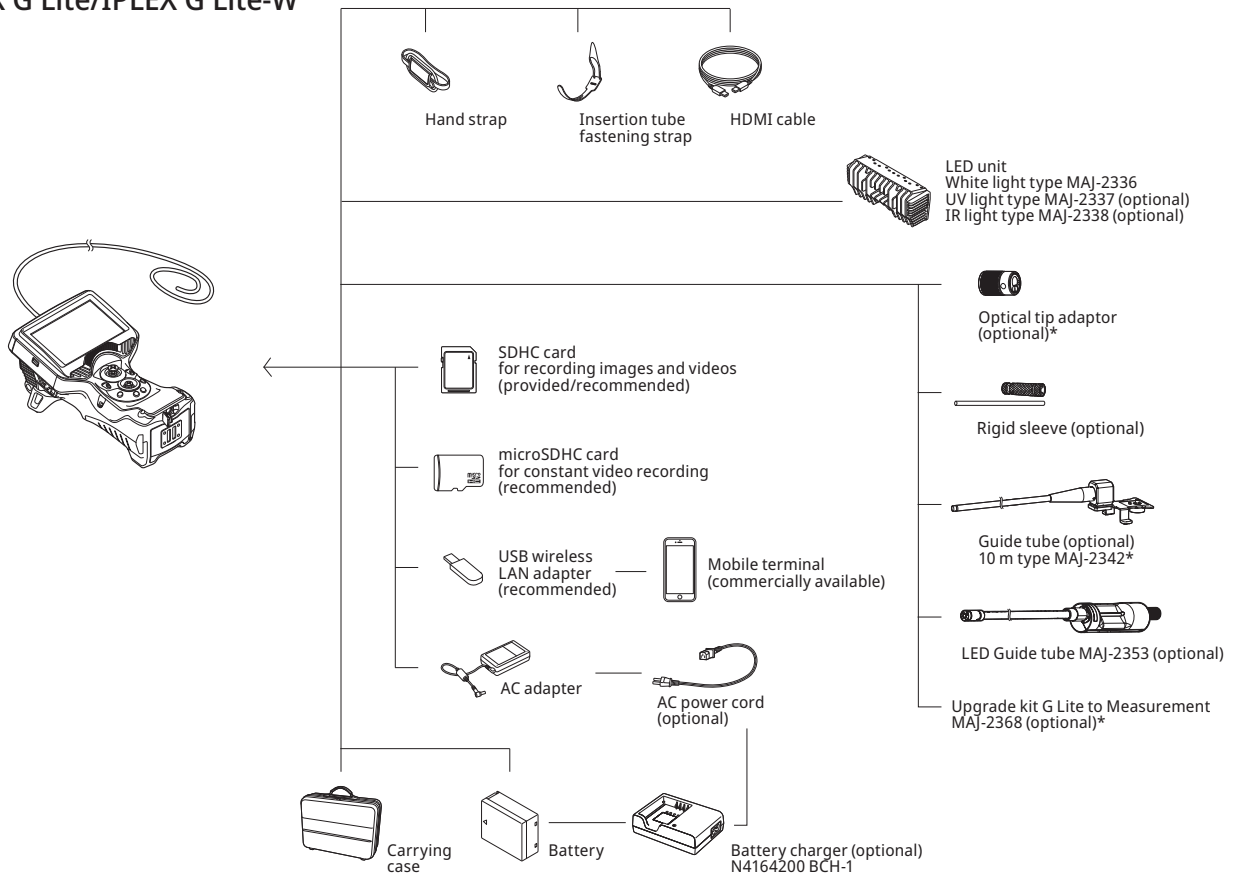


System Charts

IPLEX GX/ IPLEX GT



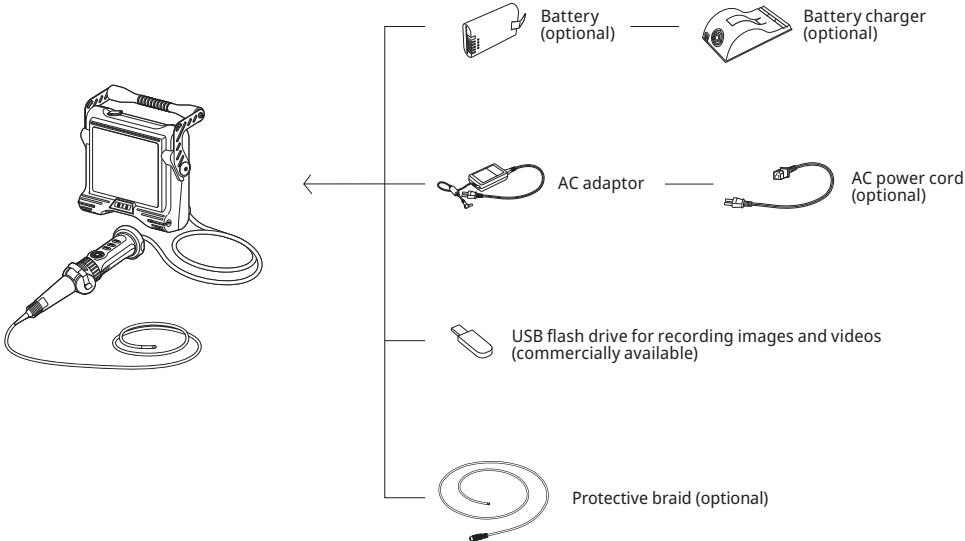
IPLEX G Lite/IPLEX G Lite-W



*Applicable to IPLEX G Lite only.

System Charts

IPLEX TX





The IPLEX NX videoscope is equipped with laser light source.

- EVIDENT CORPORATION is ISO14001 certified.
- EVIDENT CORPORATION is ISO9001 certified.
- The EMC performance of these products is designed for use in industrial environments. Using them in a residential environment may affect other equipment in the environment.
- All company and product names are registered trademarks and/or trademarks of their respective owners.
- Images on the PC monitors are simulated.
- Specifications and appearances are subject to change without any notice or obligation on the part of the manufacturer.

EvidentScientific.com

EVIDENT

EVIDENT CORPORATION
Shinjuku Monolith, 2-3-1 Nishi-Shinjuku, Shinjuku-ku, Tokyo 163-0910, Japan

OLYMPUS